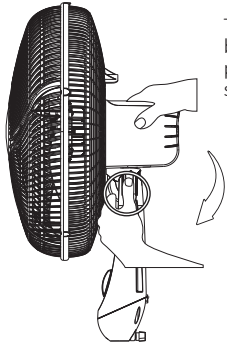
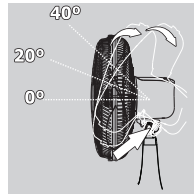


6

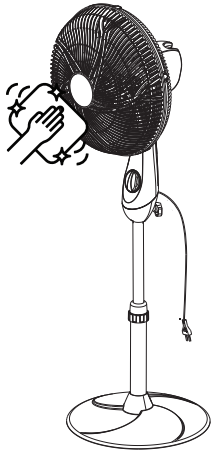
Inclination



To direct the airflow, press the tilt adjustment button as indicated in the figure on the side, and position the motor in the desired inclination as shown in below.

**7**

Cleaning



- Use only a slightly damp cloth to clean the propeller and the exterior of the instrument.
- Do not use abrasive products, polishes, alcohol, solvents or any other chemical substance.

BRITANIA
Para Britaniar sua vida

USER MANUAL
Pedestal Fan
Mega Turbo 30



CONGRATULATIONS!
You just acquired a Britania
high quality fan.

**THE DEVICE
IS ONLY A
APPROPRIA-
TE FOR
DOMESTIC
USE**

To ensure the best performance and durability of your product, read the entire manual before using it and keep it for future consultation.

BRITÂNIA ELETRODOMÉSTICOS S.A
Rua Dona Francisca, 12.340 - Bairro Pirabeiraba - Joinville/SC - BRAZIL
CEP 89.239-270 - Insc. Est. 254.861.660 - CNPJ 07.019.308/0001-28
MADE IN BRAZIL
11/24 17688 09 05 01000937 Rev.00



WARNING

NOT FOLLOWING THIS INSTRUCTIONS MAY CAUSE DEATH, FIRE OR ELECTRIC SHOCK RISK.

- Remove the plug from the electrical socket before any maintenance on the appliance.
- Do not use any kind of adapters on the appliance.



1 Important Safeguards

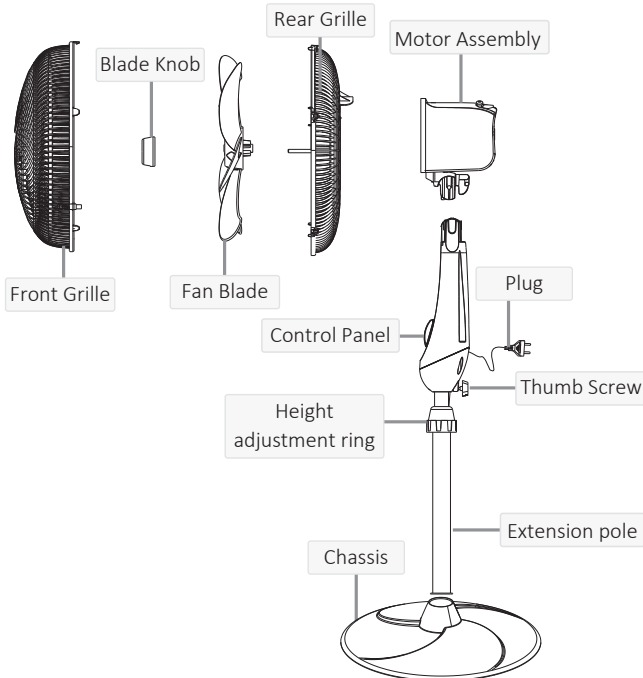
When using electrical appliances, basic safety precautions should always be taken including the following:

1. Read all instructions before using this appliance.
2. Use fan only for purposes described in the instruction manual.
3. To protect against electrical shock do not immerse unit, plug or cord in water or spray with liquids and plug the appliance directly into a 120V AC electrical outlet.
4. Close supervision is necessary when any appliance is used by or near children.
5. Unplug from outlet when not in use, when moving fan from one location to another, before putting on or taking off parts and before cleaning.
6. Avoid contact with moving parts.
7. Do not operate in the presence of explosive and/or flammable fumes.
8. To avoid fire hazard, NEVER place the cord under rugs or any parts near an open flame, cooking or other heating appliance.
9. Do not operate any appliance with a damaged cord or plug after the appliance malfunctions, or has been dropped/damaged in any manner. Discard fan or return to an authorized service facility for examination and/or repair.
10. Do not run cord under carpeting. Do not cover cord with throw rugs, runner, or similar coverings. Do not route cord under furniture or appliances.

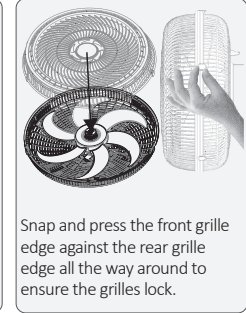
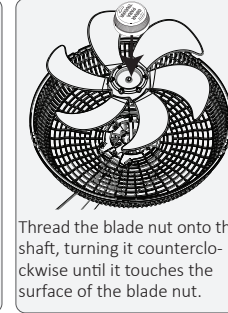
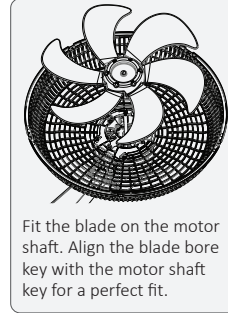
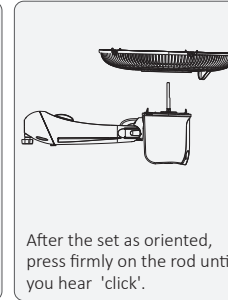
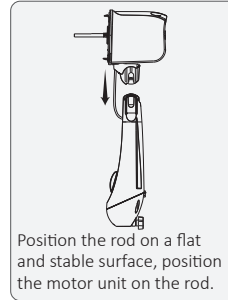
Arrange cord away from traffic area and where it will not be tripped over.

11. The use of attachments not recommended or sold by the appliance manufacturer may cause hazards.
12. Do not let the cord hang over the edge of a table, counter or come in contact with hot surfaces or leave exposed to high traffic areas.
13. Do not use outdoors.
14. To disconnect, grip plug and pull from wall outlet. Never yank on cord.
15. Always use on a dry, level surface.
16. Do not operate fan until fully assembled with all parts properly in place.
17. This product is intended for household use ONLY and not for commercial or industrial applications.
18. WARNING: To reduce the risk of electrical shock and injury to persons, do not use in window.
19. WARNING: To reduce the risk of fire or electric shock, do not use this fan with any solid-state speed control device.
20. This product employs overload protection (fuse). A blown fuse indicates an overload or short-circuit situation. If the fuse blows, unplug the product from the outlet. Replace the fuse as per the user servicing instructions (follow product marking for proper fuse rating) and check the product. If the replacement fuse blows, a short circuit may be present and the product should be discarded or returned to an authorized service facility for examination and/or repair.

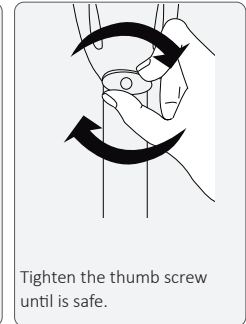
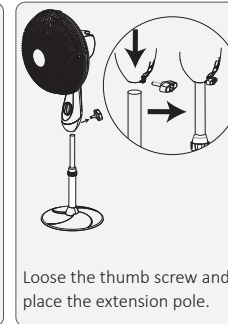
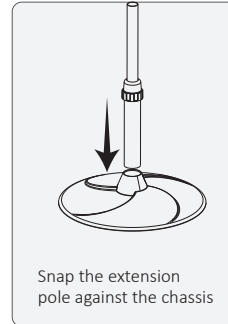
2 Components



3 Blade Assembly

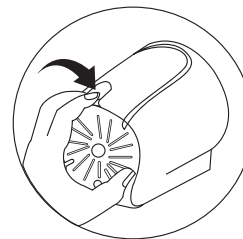


4 Pole Assembly



5 Oscillation

To turn on the oscillation of your fan, press the button (end of the motor unit) as shown in figure below.



To turn off the oscillation of your fan, pulling the button (end of the motor unit), as shown in figure below.

